



# Commercial Projects

Construction Solutions for the Future

## Preferred Window & Door Remodel Lynwood, IL



### Client

*Preferred Window & Door, Inc.  
Lynwood, IL*

### General Contractor/Engineer

*Titan Construction & Engineering Services*

### Architect

*Michael E. Stanula*

### Project Scope

*Provide concrete, PEMB steel building (erected) for remodel of the existing 12,526 sf storage facility and 6,286 sf office addition*

### Project Highlights

- *Pre-engineered steel framing tied into existing building*
- *80'x50' canopy over the recessed dock area*
- *MBCI "Superlok" roof panels*
- *3' roof overhangs on all sides*
- *R33 roof insulation system*

[www.TitanConstructionServices.com](http://www.TitanConstructionServices.com)

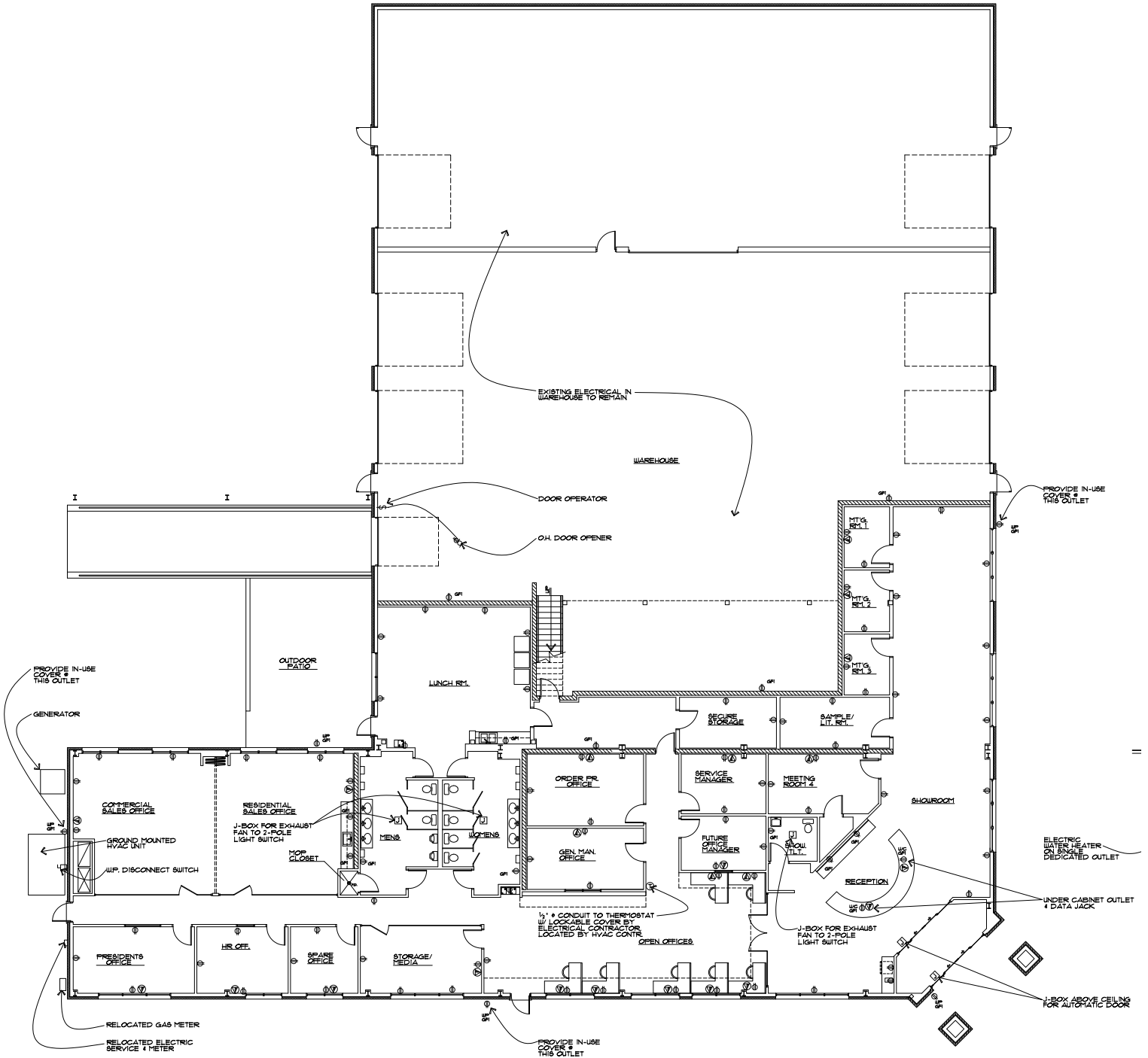
2675 N. McKinley Ave., Rensselaer IN 47978

(888) 866-4652



# Commercial Projects

Construction Solutions for the Future



[www.TitanConstructionServices.com](http://www.TitanConstructionServices.com)

2675 N. McKinley Ave., Rensselaer IN 47978

(888) 866-4652